

USB MATRIX KVM SWITCH

Up to eight users can control 32 USB-enabled PC, SUN and MAC computers



UNIMUX-4X16-U (Front and Back)

Features & Applications

The UNIMUX™ USB Matrix KVM Switch allows up to eight users to individually command or simultaneously share up to 32 USB computers. Access USB-enabled PC, SUN and MAC computers using USB keyboards and mice, and VGA multiscan monitors.

USB host computers and USB devices can be hot-plugged or removed at any time. Allows any USB device (keyboard and/or mouse) to control any attached USB host computer. International keyboard layouts are supported in auto-detection mode, or can be manually selected via the On Screen Display (OSD) menu.

- Equipped with OSD, Liquid Crystal Display, and RS232.
- Rackmount is standard on all UNIMUX-nXm-U models. The smaller models are also available in a desktop case (see page 45 for available sizes).
- Dedicated microprocessors prevent computers from locking up, ensuring reliable control.
- Fully compliant with USB standards (1.0, 1.1).
- The advanced OSD user interface with password security makes the UNIMUX USB Matrix KVM Switch simple and reliable to use in Enterprise data centers.
- Computers can be shared or used exclusively.

Specifications

Hosts

- Female 15-pin HD and female USB Type B connectors.
- Supports PCs with USB-enabled OS (Windows 98/ME/2000/XP, Windows Server 2003, Linux) and USB ports.
- Supports PCs with USB-enabled BIOS (legacy USB support) and USB ports.
- Supports SUN Blade 100, SUN Blade 1000, SUN Fire™ 240 and SUN Ray.
- Supports MAC G4, G5 and Xserve.
- Supports MAC soft (keyboard) power-on.
- Any legacy PS/2 or SUN computer can be connected by using a USB-PS2-R or USB-SUN-R adapter (see page 42).

Monitor

- Crisp and clear 1900x1200 resolution.
- Female 15-pin HD connectors.
- A multiscan VGA monitor is required to display the different video outputs from different platforms.
- Bandwidth is 150 MHz.

Devices

- Female USB Type A connectors.
- Compatible with most USB keyboards and mice, including Microsoft USB Intellimouse®, Logitech Cordless Elite Duo keyboard and mouse, Gyration keyboard/mouse and Crystal Vision keyboard with touchpad.
- Keyboard and mouse are hot-pluggable.
- USB MAC and SUN startup keys are supported on all platforms of input devices.
- Keystrokes are translated across platforms.

Power

- 110 or 220 VAC at 50 or 60 Hz.
- The UNIMUX-2X8-U and the UNIMUX-4X8-U (desktop and rackmount) use AC adapters as their power source.

Regulatory Approvals

- CE (except UNIMUX-2X8-UDT and UNIMUX-4X8-UDT), RoHS

Warranty

- Two years



330.562.1999
Worldwide fax



sales@ntigo.com



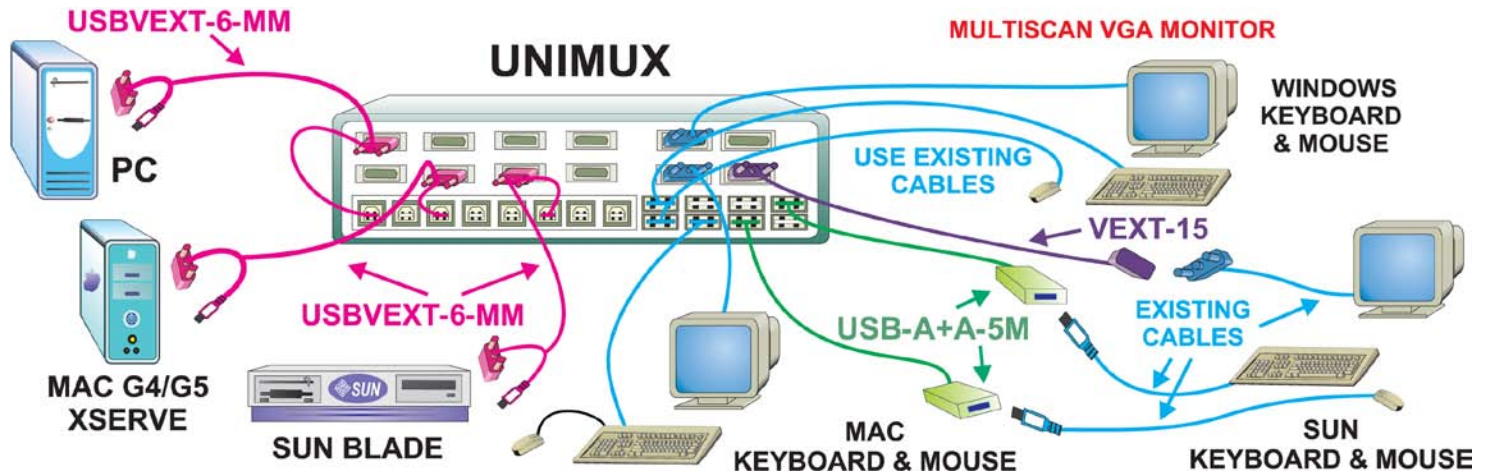
www.networktechinc.com

©2006-2007, NTI
All rights reserved

USB MATRIX KVM SWITCH

Up to eight users can control 32 USB-enabled PC, SUN and MAC computers

Configuration and Cable Illustration



Built-In Control Methods

Front Panel Interface

- Locally change ports with front panel buttons.
- Use front panel buttons to move through LCD screens and execute actions.
- LCD indicates currently selected port for each user.
- Use buttons to configure RS232 control.
 - Change baud rates for RS232.

Keyboard

- Use the keyboard to command the switchbox to select ports or configure the **Scan**, **Sharing** and **Broadcast Modes**.
 - Normal Operating Mode** allows the user to directly operate the selected computer with a transparent presence of the NTI switch.
 - Sharing Mode** allows users to share the same computer.
 - Command Mode** allows the user to give instructions to the switch through his/her keyboard. Keystrokes are not passed to the computer.
 - Scan Mode** feature causes the switch to automatically and sequentially display the video from each selected powered-on computer for a duration of 2-255 seconds (programmable by the user).
 - Broadcast Mode** allows the user's keystrokes to be sent to all selected powered-on computers.
- Type <Ctrl> + < ` > to go into **Command Mode**.
- Press <Esc> to leave **Command Mode** and return to **Normal Mode**.

RS232

- Female DB9 connector.
- Baud rate selectable from 1200, 2400, 4800 and 9600.
- Address up to 15 units, all of which can be daisy-chained and controlled by one serial port.
- Even if some switches are turned off, the others can be controlled via a daisy-chain connection.

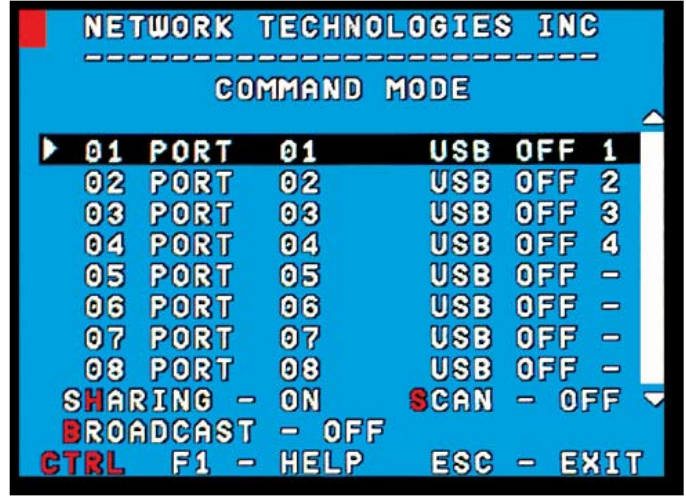
USB MATRIX KVM SWITCH

Up to eight users can control 32 USB-enabled PC, SUN and MAC computers

Built-In Control Methods (Continued)

On Screen Display (OSD)

- Select or list computers by name or port number.
- Port names can be up to 12 characters long.
- OSD is controlled by using the keyboard and mouse.
- Help Screens assist users with the OSD.
- Displays the power status of each computer.
- OS and software-independent.
- OSD comes built into the switch, no need to install additional hardware or software.



Security

- Advanced security included with switch.
- Each user password and name can be up to 13 characters long, and each switch can store up to 63 users.
- Administrator can enable or disable all security features and select which computers each user can access.
- Once security is enabled, a user or administrator must login in order to access any of the computers connected to the switch.

Ordering Specifications for the USB Matrix KVM Switch

This example simplifies the NTI part number by breaking it down into the available options. When ordering, choose the options that you require.

Number of Users Number of CPUs Universal KVM Switch Optional Desktop Style
UNIMUX - n X m - U DT
 Only Two Units Are Available in a Desktop Case

USB Matrix KVM Switch Models

NTI Part #	# of Users (n)	# of CPUs (m)	Special Options	Desktop Size WxDxH (in)	Rack Units	Rack Size WxDxH (in)
UNIMUX-2X8-U	2	8	Desktop	10x7.5x3.3	1RU	19x10x1.75
UNIMUX-2X16-U	2	16		Not Available	2RU	19x12x3.5
UNIMUX-2X32-U	2	32		Not Available	3RU	19x12x5.25
UNIMUX-4X8-U	4	8	Desktop	10x7.5x3.3	1RU	19x10x1.75
UNIMUX-4X16-U	4	16		Not Available	2RU	19x12x3.5
UNIMUX-4X32-U	4	32		Not Available	3RU	19x12x5.25
UNIMUX-8X8-U	8	8		Not Available	3RU	19x12x5.25
UNIMUX-8X12-U	8	12		Not Available	3RU	19x12x5.25
UNIMUX-8X16-U	8	16		Not Available	3RU	19x12x5.25
UNIMUX-8X24-U	8	24		Not Available	3RU	19x12x5.25
UNIMUX-8X32-U	8	32		Not Available	3RU	19x12x5.25

Cables

- Interface cables between your computers and the switch are required for proper operation. Use USBVEXT-xx-MM and standard interface cables to connect switches to computers.
- Cables not included.



330.562.1999
Worldwide fax



sales@ntigo.com



www.networktechinc.com

©2007, NTI
All rights reserved